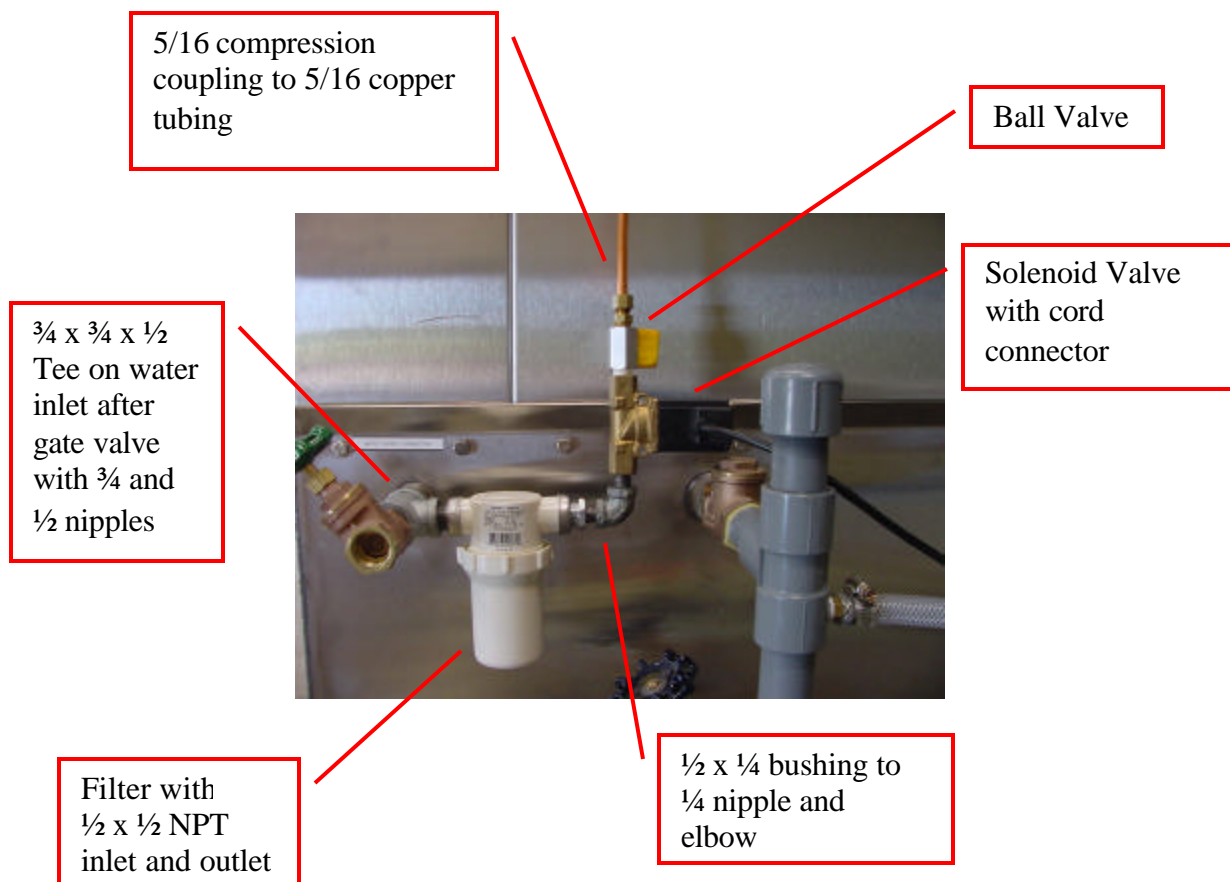


Installation of the 20946 TURBO NOZZLE Kit

The *Turbo Nozzle* enhances the moist air generating performance of Humidaire Units during the middle of hot, dry afternoons. This is the time of day when some lint moisture applicators (like the Steamroller) can use the richest moisture laden air the Humidaire Unit can provide.

A small water mist nozzle is installed right after the air hood of the Humidaire Unit. During the dry hot hours of the day, the ginner turns on the *Turbo Nozzle* switch located on the electrical panel in the Humidaire Unit cabinet. With the switch on and cotton flowing up the lint flue riser, a solenoid valve opens allowing water to flow from the Humidaire Unit's fresh water supply line to the mist nozzle. The water mist automatically stops when cotton stops flowing up the riser.

The supply water must have a minimum pressure of 30 psi (2.1 bars). The volume of water flowing to the mist nozzle is tiny compared to the volume of water being evaporated by the normal operation of the Humidaire Unit. Initially, adjust the ball valve located just after the solenoid valve to $\frac{1}{2}$ open. Adjust farther open if more moisture is needed.



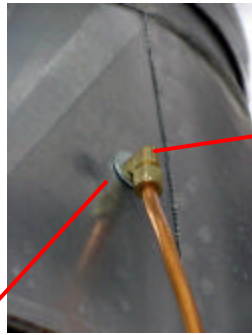
NOTE: The fittings shown above are included in the kit.
Observe flow direction arrows on filter and solenoid valve.



SAMUEL JACKSON, INCORPORATED

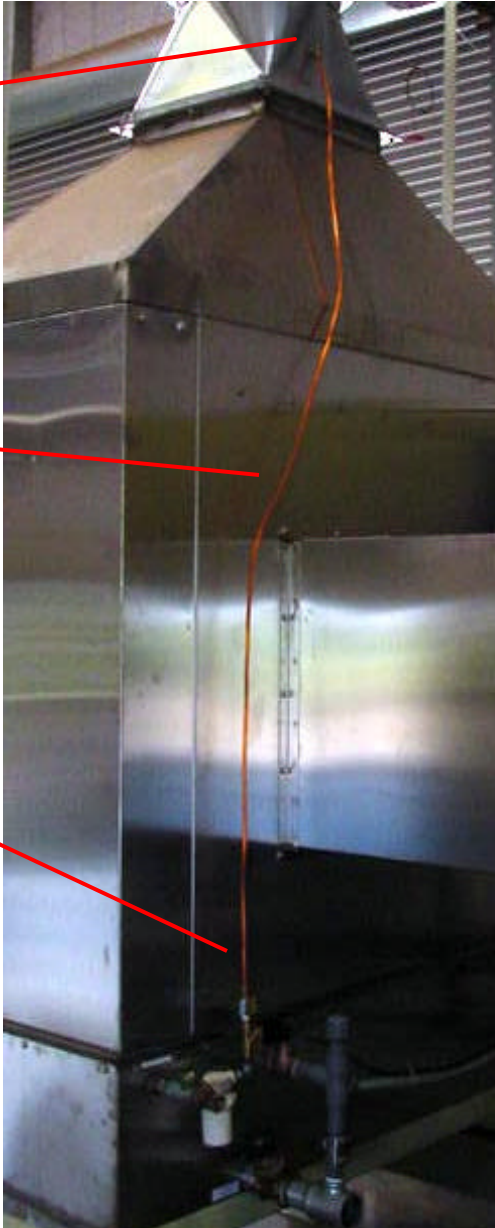
Lubbock, TX USA / Tel: 806-795-5218 / Fax: 806-795-8240 / www.samjackson.com

Note: Remove mist eliminator for easy access inside the outlet transition.

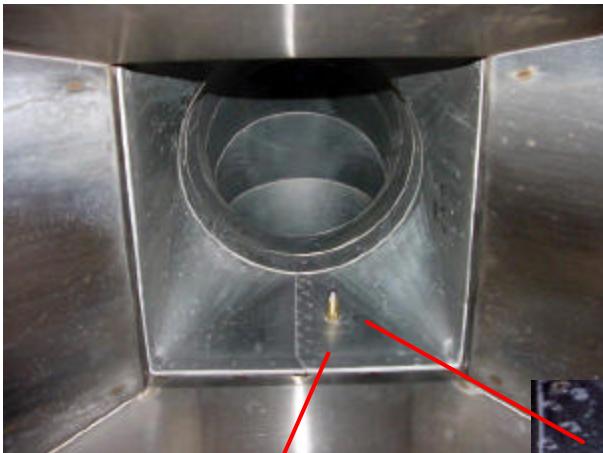


Drill 7/16 hole in outlet transition. Insert 1/8 MPT pipe threaded end of 5/16 compression coupling elbow through wall with threaded washer on outside. **DO NOT INSTALL NOZZLE IN HUMIDAIRE UNIT'S OUTLET HOOD.**

Route tubing so it is not touching any part of spray chamber. Keep at least two inches away from surfaces.



5/16 copper tubing (8 foot supplied), cut to fit



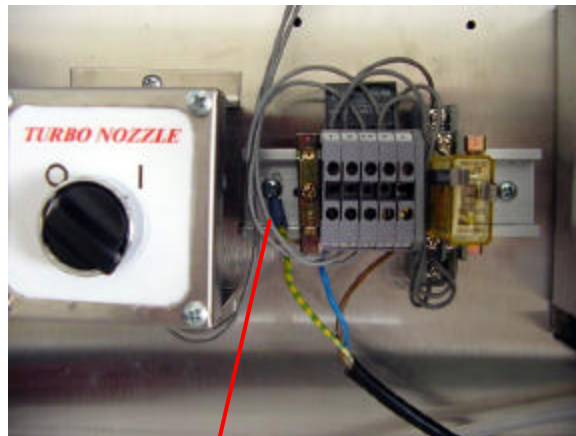
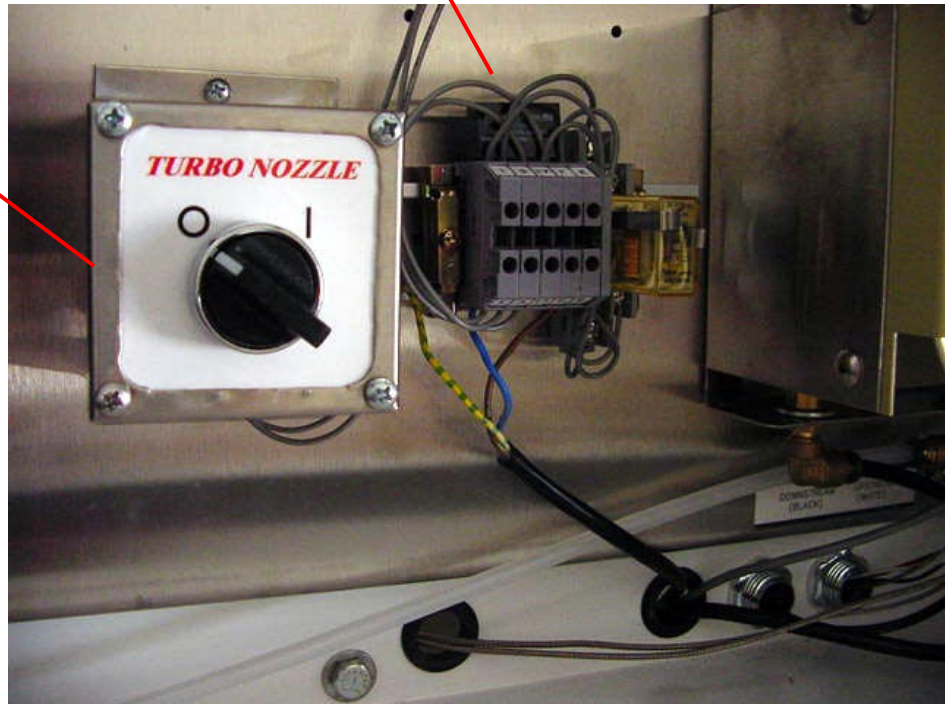
Mist nozzle inside outlet transition



Locate the pre-wired selector switch and terminal block assembly next to each other on a free spot in the Humidaire Unit electrical cabinet. For most Humidaire models, a good location is next to the air flow switch in the lower right hand corner of the electrical panel. See Electrical Connections diagram CA13600 for wiring details.

Terminal Block Assembly

Selector Switch Assembly



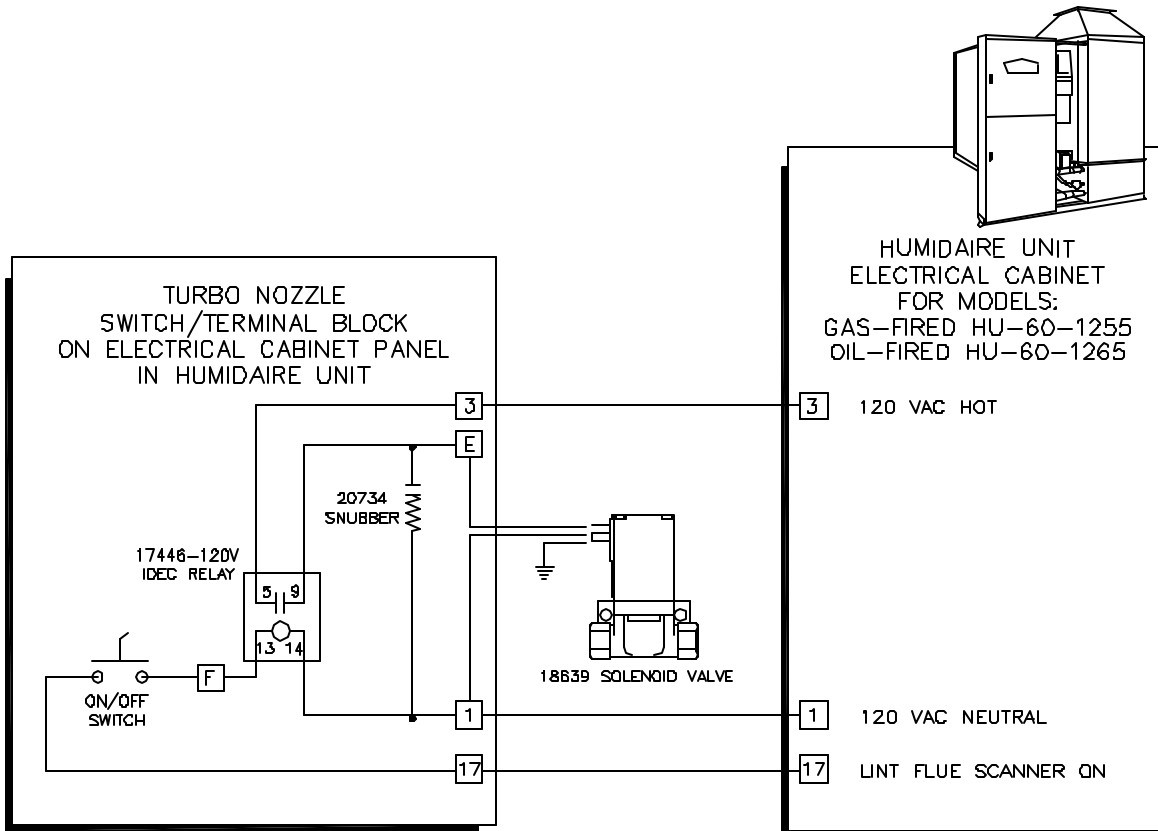
Connect solenoid's yellow/green ground wire to cabinet base

G:\MANUALS\HU-TURBO\20946.DOC



**EXTERNAL ELECTRICAL CONNECTIONS
20946 TURBO NOZZLE KIT**

**CA13600
8-01**



TERMINAL CROSS REFERENCE TABLE FOR HUMIDAIRE MODELS:

| | | | |
|-------------------|----|---|----|
| TERMINAL BLOCKS | 1 | 3 | 17 |
| HU-60-1255 (GAS) | 1 | 3 | 17 |
| HU-60-1265 (OIL) | 1 | 3 | 17 |
| HU-60-1250 (GAS) | 10 | 3 | 7A |
| HU-60-1260 (OIL) | 10 | 3 | 7A |
| HU-60-1106C (GAS) | 10 | 3 | 7A |



SAMUEL JACKSON, INCORPORATED

Lubbock, TX USA / Tel: 806-795-5218 / Fax: 806-795-8240 / www.samjackson.com